



Working together for
better health and care

NHS

Thurrock

Clinical Commissioning Group

Working together for a better future...

...for Thurrock IN THURROCK

Developing plans for a
new model of health
and care for the
people of Thurrock



Engagement document

 thurrock.gov.uk

healthwatch
Thurrock

Introduction and background

Patients often tell us that they find the health and social care system overwhelmingly complex. We have listened and in response, NHS Thurrock Clinical Commissioning Group (CCG), your local health service leaders along with our Thurrock Council colleagues, are embarking on an ambitious vision to radically change the way health and social care services are commissioned and provided for within our local population.

This will involve changing the way we currently buy services, how we manage that process, who we buy it from, and how we make that happen.

Our vision wraps around the principles of Thurrock's Health and Wellbeing strategy, which advocates that citizens are empowered to take personal responsibility for their health and wellbeing and that they have health and care solutions that can be accessed close to home.

Our plan is to work with our partners and the community to introduce new neighbourhood

based care models to enhance our existing community services so that they include a broader range of skills and go further to reduce the complex and fragmented nature of health and social care. Future plans for development of our GP practice premises will also support this.

The main aim of our vision is to ensure that Thurrock funds and resources will be used to pay for health and care for Thurrock people within Thurrock. For example, at the moment, Thurrock adults who do not need to be in a hospital bed,

but are not fit to be discharged home (intermediate care) can find themselves in any one of six locations across south west Essex.

The first phase of the transformation programme will therefore involve moving Thurrock intermediate care provision which is currently spread across six sites in south west Essex, to provide it on a Thurrock-only basis making the best use of existing Thurrock resources.

We are sharing this vision with the local population through this document as the first step of a wider engagement programme.

Go to page 4 to see how you can get involved.

Dr Vaiyapuri Raja,
local GP and clinical lead
for this programme



Why the need for change?

While there have been major improvements in health and care services in recent years, these improvements have not kept pace with changes in society over the years, and if these are not addressed we know the health system will struggle to meet future needs.

In recent public engagement events, a recurring theme is the desire for health and care services to be more accessible for Thurrock people.

We also know that the system is not currently set up to cope with the rapid growth in demand for health and care service. By developing our vision and the enhanced neighbourhood based teams (our new models of care), we will be in a better position to meet that demand.

The Thurrock pound

While we are in a more stable financial position than some of our system partners, maintaining that position gets more challenging every year. We recognise that there are still efficiencies that we can make across the system and we are committed to working together to get the most for the Thurrock pound.

Our new models of care will be locality (neighbourhood) based and will be delivered by fully integrated health and social care teams delivering coordinated care closer to, or at home.

The teams will work with the existing health and care teams within each locality (neighbourhood), and with new developments in GP practice

premises as they emerge such as the proposed development of an integrated healthy living centre in Tilbury.

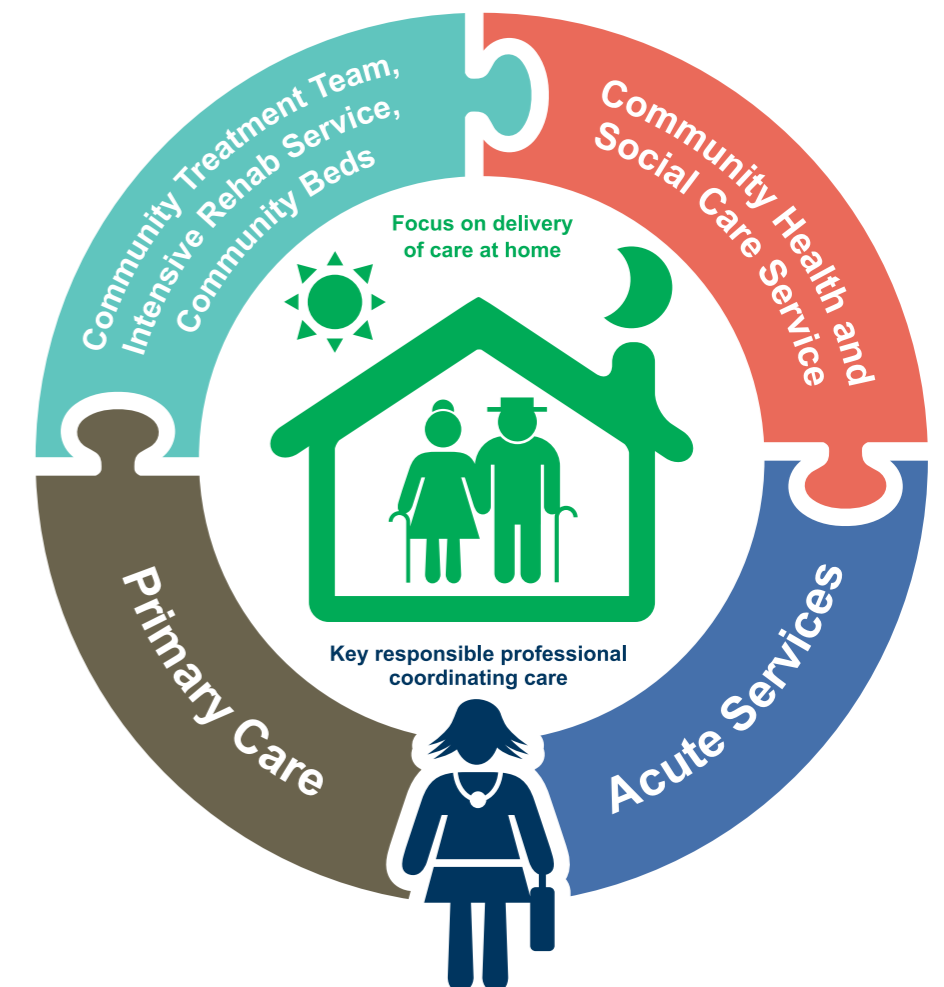
This new model means that district nursing, pharmacy, dentistry and domiciliary care teams will work in partnership to develop care plans that are personalised, holistic, and are delivered by specialists from across the health and care system. Care will be co-ordinated around the patient as opposed to traditional organisational service structures, and the voluntary sector will also play a key part in helping communities to support and maintain their independence.



"For Thurrock in Thurrock is an exciting opportunity to reshape how health and care services are provided, and we will continue to see these holistic services wrap around the needs of our population here in Thurrock."

Barbara Rice,
Chair of Thurrock's
Health and Wellbeing Board

Our vision for the future...



Who are we and what do we do?

To put it simply, NHS Thurrock Clinical Commissioning Group (CCG) is responsible for planning, buying and delivering local health care services. Made up of 32 GP practices, clinicians, nurses and NHS managers and staff, we are given a yearly budget to buy healthcare from hospitals, community and mental health services and some specialist services (service contracts with GPs, dentists, pharmacists and opticians are managed by NHS England). Thurrock Council is responsible for social care services in Thurrock.



Our vision for the future...

What we want to achieve: Care closer to, or at home provided in an integrated way.

So what does this mean?

We want to improve people's experience of the health and care system in Thurrock by providing a more holistic model of (locality) neighbourhood based care, closer to home for the local population.

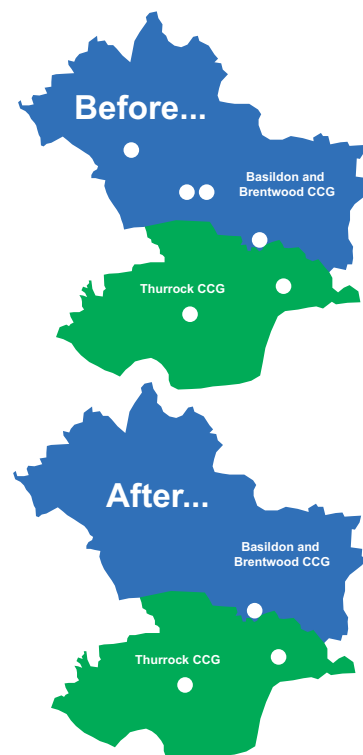
How will we get there?

A stepped approach; vision for older people. The first phase of this will involve moving Thurrock intermediate care provision which is currently spread across six sites in south west Essex, and to provide it on a

Thurrock-only basis making the best use of existing Thurrock resources.

This is likely to be a hugely complex and ambitious system transformation programme that will need to be delivered collaboratively with our system partners. We have therefore shared our vision with them and colleagues from Healthwatch Thurrock and voluntary services to get their views and we have been encouraged by their positive responses. We would now like to get your views and feedback too.

Map of South West Essex



How can you be involved/Have a say?

A positive response from the public will mean that we can proceed with our vision and start to work through the first stage of the transformation programme. We will of course consider all feedback received and will use it to inform future service planning.

We hope this document has given you an insight into our vision of health and care for Thurrock. We would now like to hear what you think.

The CCG will be working closely with Healthwatch Thurrock, Thurrock Coalition and Thurrock CVS to share our vision widely across Thurrock so that people have a say in decisions that affect them.

Look out for further information and public engagement events led by Healthwatch Thurrock regarding *For Thurrock in Thurrock* over the coming months and on our website.

Visit the Healthwatch Thurrock website for details of these events
www.healthwatchthurrock.org

The Question:

Having read the *For Thurrock in Thurrock* vision, do you think it is right for the Thurrock population? Please tick one of the boxes.

Yes No

If you would like to expand on your feedback, please use a separate sheet of paper.

You can also answer the survey question online:
www.surveymonkey.co.uk/r/ForThurrockinThurrock

Freepost RTHJ-JSZT-JURZ,
NHS Thurrock CCG, Civic Offices,
New Road, Grays, RM17 6SL

Contact us: Civic Offices,
2nd Floor, New Road, Grays, RM17 6SL

Tel: 01375 365810

Email: thurrock.ccg@nhs.net

 @ThurrockCCG

 [facebook.com/ThurrockCCG](https://www.facebook.com/ThurrockCCG)

If you would like this in a different format, such as large print, Braille or tape, or in a different language, please contact the CCG on 01375 368 810 or email: thurrock.ccg@nhs.net